



place | typology | program
GROUNDINGS

Json Bailey

Details



750 Edwin L. Ward, Sr. Memorial Hwy
Rutherford, NJ 07070
phone | 1.515.276.9686



email | baileyjson@icloud.com

Nationality

United State of America

Place of Birth

Wisconsin

Links



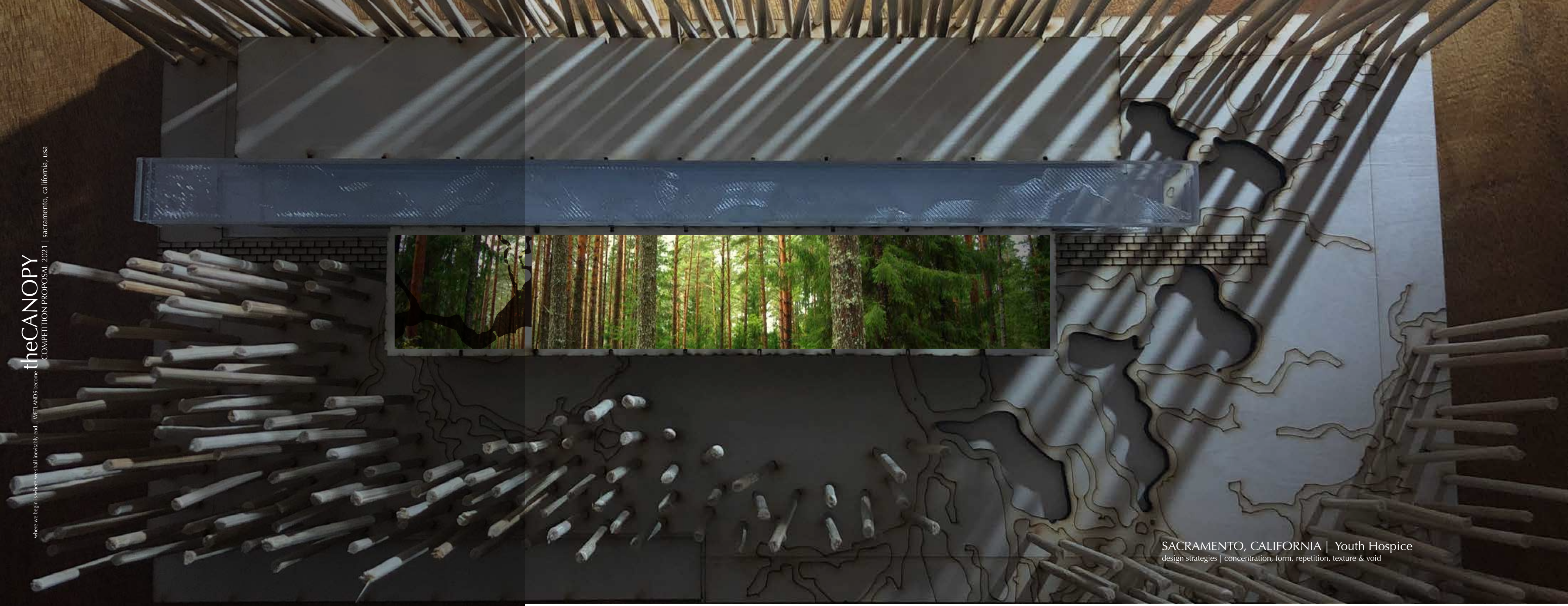
www.surfacestudio.org

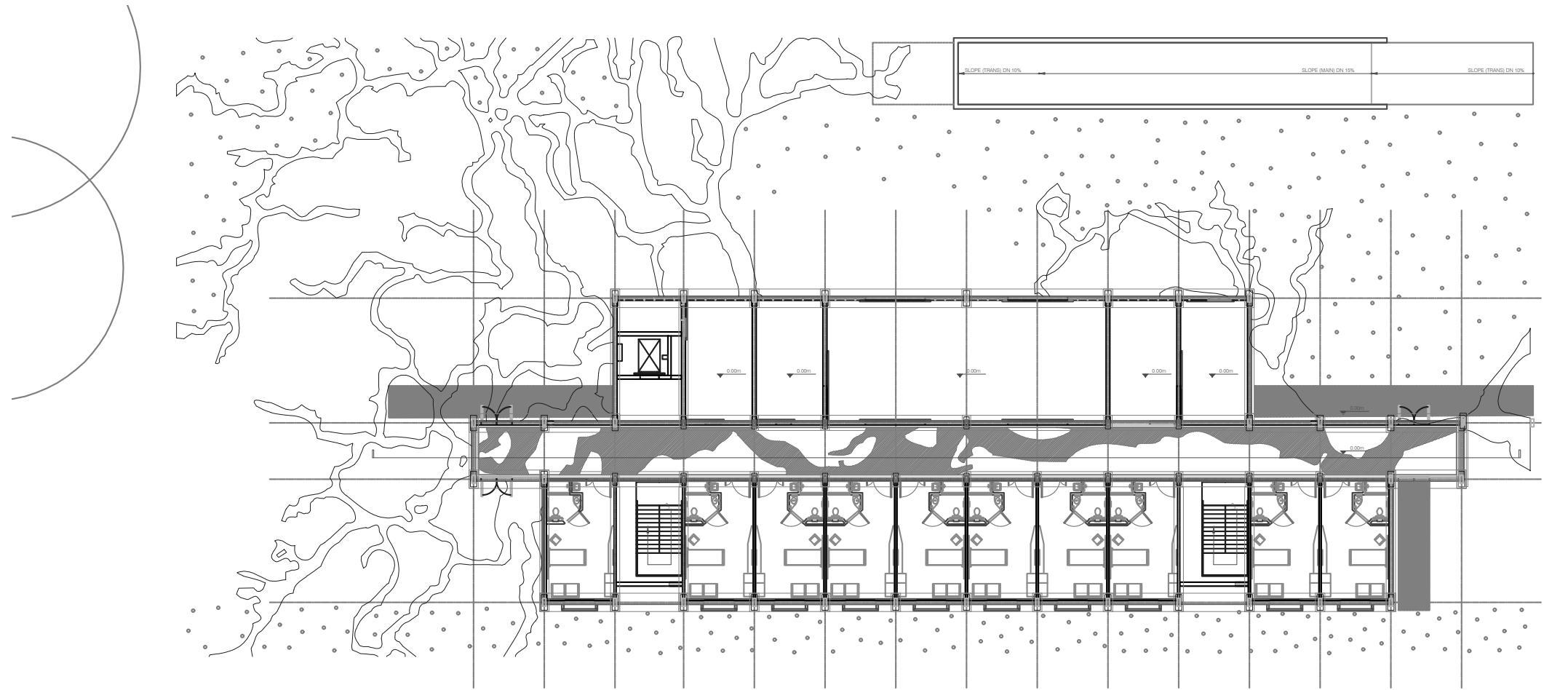
[linkedin.com/in/jasondbailey/](https://www.linkedin.com/in/jasondbailey/)

SIMPLE THOUGHT... essences, the site which is beyond sight.
Essences are the inherent set of properties that form ambiances as the essential quality of a designed form within a place...
where we begin is where we end...
Ambiance, that which is identified as a feeling grounding a particular place...



grounding...





GROUND PLAN | scale 1:500



SACRAMENTO, CALIFORNIA | Youth Hospice
design strategies | concentration, form, repetition, texture & void

Surface | **Methodology** | working sample A | Sacramento Youth Hospice

The Essence of Thoughts | **The Assemblage**

Thoughts essential to understanding surfaces as composition of bound essences that evoke a particular ambiance regarding. Each essence (poster) captures a mood (feeling) that is essential to the recognition of ambiance as potential. An essence identifies a particular core property that is essential for a thing to be what it is, place.

Ambiance | place
the identification of a sense response

- feeling. IDENTIFY | the essence of a particular place
- feeling. IDENTITY | the cultural artifact that marks the terrain in time
- feeling. IDENTIFICATION | the root form of thought from which time is bridged

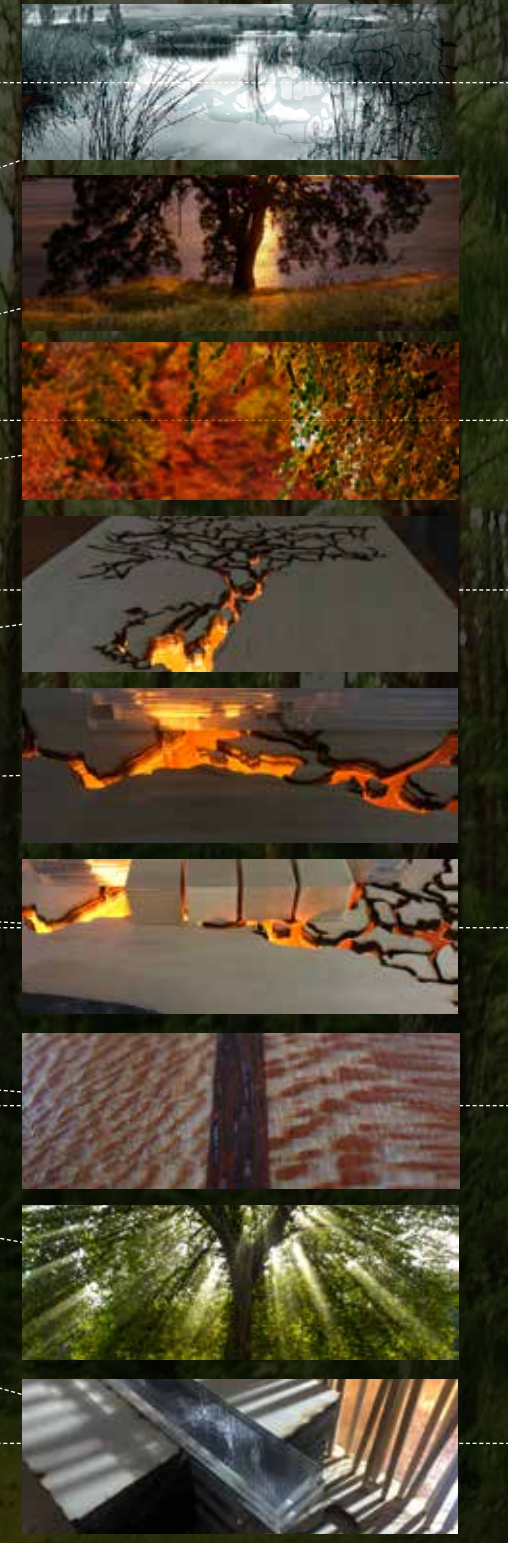
Essence | typology
the inherent nature of an identified form

- form. POTENTIAL | the essence form as a recognition of intentionality
- form. IDEAL | the essence of form as an sculpted sensation of textures
- form. DETERMINED | the conceptualization of thoughts as an organized entity

Surface | program
the embodied phenomena as a potential moment

- experience. TEXTURE | the existence of materials as a interpretation of place
- experience. LIGHT | the essence of light as a presence revealing the textural nature within
- experience. AMBIENT | an artifact that is potential material formation emerging within existing topographies derived from cultural actions.

ambiance | essence | surface



ambiance.ESSENCE | **the WETLAND** is the fertile terrain upon which all settle.

ambiance.ARTIFACT | **COTTONWOOD** is the cultural artifact deposited to shelter the first miner and all that came after.

ambiance.FORM | **the CANOPY** is the cultural form derived from an experience of texture and light along the paths of Sacramento.

essence.POTENTIAL | the **canopy** is a way of thinking about **wetlands**.

essence.IDEAL | the form as imagined is a sinuous **confluence** emitting light.

essence.DETERMINED | the form is a concentration of **forms** and **volumes** of light.

surface.TEXTURE | the essence of sycamore is an interlocking **grain** that engenders a reddish brown speckled **tone**...

surface.LIGHT | the essence of light is a volume of **filtered** energy... **ALDER**

surface.FORM | The Canopy... This life form becomes a host (hospice) of **soothing lighting**.



NOTES ON SITE

SITE AREA	5,700 square meters
BUILDABLE AREA	3,420 square meters
DESIGN PROGRAM	1,000 square meters
OPEN SPACE AREA	2,280 square meters
MAXIMUM HEIGHT LIMIT	10 meters
SITE TEMPERATURE RANGE (HIGH/ LOW)	July 29c average/January 13c average
WINDIEST MONTH	June 10km average
AVERAGE HUMIDITY	February 66%
PREVAILING WINDS (MAXIMUM)	
RAINFALL (YEARLY AVERAGE)	30.5 mm
SUN ANGLES (SUMMER/ WINTER)	81.4* summer/ 25.51* winter
LOCAL ENVIRONMENTAL CATASTROPHIES	Sand Storms
SHADOW LENGTH	0.15m summer/ 2.10m winter
CLIMATE	Hot semi-arid
POPULATION	1,017,379 (2021 Marrakech)

theLOOM
COMPETITION PROPOSAL 2021 | marrakech, morocco



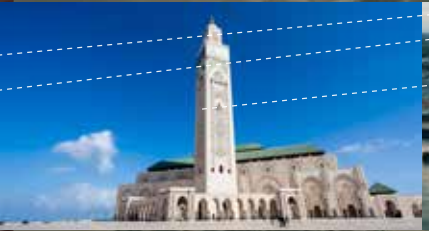
condition | Chefchaouen



condition | Fez



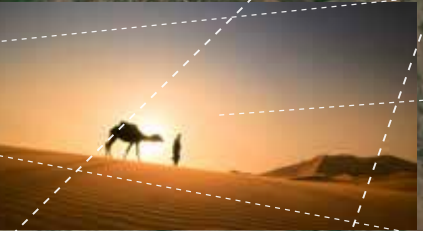
condition | Rabat



condition | Casablanca



condition | Essaouira



condition | Sahara Desert



condition | Atlas Mountains

ambiance. place | the identification of a sense response. theLOOM

conditions | Marrakech City

condition | site and immediate context

conditions | marrakech extended context.

conditins | political context





MAPimage | cultural fabric of morocco...MARRAKECHIANS

MAPimage | cultural fabric of morocco...CULTURAL ACTIVITIES

MAPimage | cultural fabric of morocco...CULTURAL FORMS

FABRIC | the essence of Morocco.

CARPET | people as cultural artifacts.

PATCH | the cities stitched of material culture.

LOOM | the architectural object.

ESSENCE | FABRIC... the place, Morocco is a confluence of dense textures. **شركارم**

The LOOM

The primary thought sponsoring this work is Morocco is a topography that reveals a cultural fabric. Thus this work suggests that the essence of Morocco is a dense fabric composed of a variety of patches.

The conceptualization of Surface

TOPOGRAPHY

Densities are particular arrangements of elements forming a tapestry of phenomena recognized as spatial form. Form occurs on multiples levels. The first level design consists of the cities being patches of form. The second noticeable level is the city level within their walled city (Medina) forms inside which objects are irregular.

FABRIC...the essence

An oasis is an organic 'patch' that draws inward the energy of a desolate topography. Once brought forth diverse collection as such becomes a recumbent form as if a 'cultural fabric' of dense strands (textures). The textures as experienced become more as they are continually stitched and restitched in time. From this becomes a cultural oasis along the edge of the Lalla Takerkoust (lake). The oasis is the site within which the Moroccan energy is captured and flows thru a blend of artful volumes. Light permeates through rhythmic tones of red (MARRAKECH RED CITY - **شركارم عارم حلا ةني دمل**) and indigo (Mecca, the site of the spirit).

Surfaces are natural occurrences continually becoming a matter of cultural erosion. The enduring occurrence formed is a topography. Morocco is an organic situation crafted of densities, forms, and flows. The essence of Morocco is a cultural 'fabric' continually formed, reformed, and eroded. That which becomes a tapestry of spatial strands is a composition of patches or situational moments. The moments within the fabric of Morocco are divergent cityscapes. These cityscapes locate the colorful historic nature of Moroccan civilization. The patch-work of cities as identified are essential to the composition of this place.

CONDITIONS | PATCH...the phenomena, of colored cities stitched as if to patch time....

EROSION

Contextual Erosion as the processes and residual accumulations of force (what) affecting existing spatial forms.

PATCH...the phenomena that are.

The local phenomenon within the fabric of Morocco is the strand of patches or cities. The patches exist as sites of cultural erosion. The cities of Morocco compose a series of moments that collectively mark the spirit of Morocco. The patches (cities) share common notions regarding religion, food, clothing, language, art, poetry, music, and architecture evoking a sense of place.

The cultural 'erosion' that exists within is actions or forces that affect spatial form. What are spatial objects? Objects are any or all of the given cultural artifacts that litter the topographical fabric of Moroccan cities such as Rabat, Fez, Casablanca, Agadir, Essaouira, Chefchaouen, and Marrakech. These cities are collections of tone and textural fibers continually re-crafting a spatial continuum. The finely crafted patchwork sorts and re-orders how cultural forms meander as harmonious artifacts.

FORMS | LOOM... the object, becomes tool from within which culture becomes more.

ARTIFACTS

material formations emerge from cultural actions of force that encourage/inspire indeterminate energies to reveal contextual contours

LOOM... the object becomes.

The loom herein is an artifact that binds divergent strands of culture into a harmonious labyrinth of colored surfaces blending artful volumes permeated by rhythm tones. Once formed, simple forms, volume, colors, and textures shall exit as a derivation of the Amazigh or Berber looms that form new strands.

The loom is an architectural artifact that is a sensitive response to the fabric that is Morocco. This form becomes form within this place via the physical emergence of simple linear forms occupied by volumes. The rammed earth wall (local building technique) forms a series of layered voids generating a labyrinth-like quality of flow. The primary void of the object is a great void that is a continuous water garden. The garden is awash with natural light via three openings of light that permeate the linear mass. Within this blend of artful volumes, Moroccan Beldi Zellij patterned tiles respond to and are influenced by Mecca (blue-based tiles) and Marrakech (red-based tiles).

The color and tone of this cultural artifact reveal a sense of place. Marrakech embodied by the Cultural Center Marrakech. That which is a sensible response to the beauty of Morocco is an ambient form.

MARRAKECH, MOROCCO | Cultural Center

شركارم عارم حلا ةني دمل
desig strategies | form, volume, color & texture

theLOOM

where we begin is where we shall inevitably end... FABRIC becomes COMPETITION PROPOSAL 2021 | marrakech, morocco

MARRAKECH CULTURAL CENTER
شكارة مءارم ءال ءني ءمل
design strategies | form, volume, color & texture

AMBIENT FORM | Culture Center view from the northwest.
The phenomena as experienced...form



MARRAKECH, MOROCCO | Cultural Center
شركاء تارم حلا ة نني دمل
design strategies | form, volume, color & texture



ECOLOGY
WATER GARDEN | THERMAL ABSORPTION THROUGH THE INTERIOR GARDEN. THE VOLUME ALSO ACTS AS A CHIMNEY TO RELEASE HEAT USING CONVECTION CURRENTS.

ECOLOGY
GEOTHERMAL COOLING | GROUND SOURCE COOLING TO PASSIVELY UTILIZE THE TEMPERATURE OF THE GROUND TO SUPPLY COOLING THROUGH THE FLOORS.

ECOLOGY
GREEN ROOF | THERMAL ABSORPTION TO REDUCE HEAT GAIN THROUGH THE ROOF

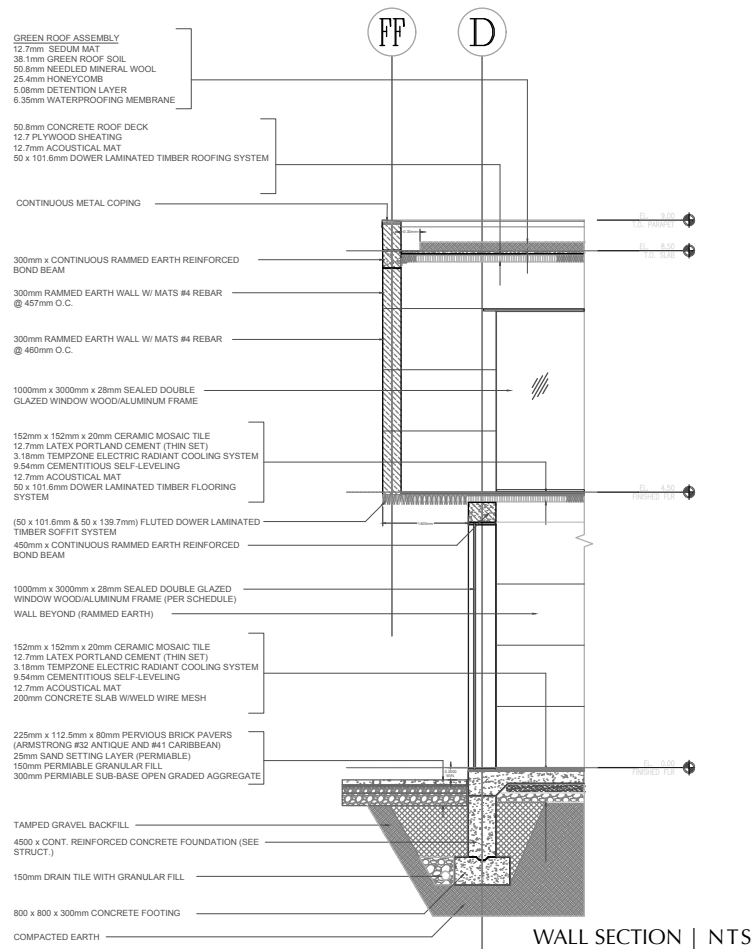
ECOLOGY
DOUBLE GLAZING | MULTI PANE UNITS TO REDUCE SUMMER HEAT GAIN

ECOLOGY
THERMAL MASS | RAMMED EARTH WALLS TO ABSORB AND RELEASE HEAT.

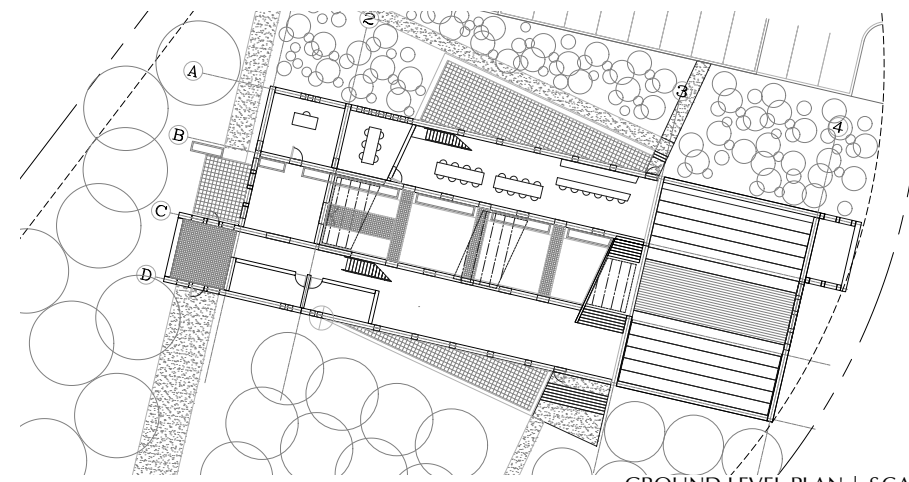
ECOLOGY
PASSIVE COOLING | ORANGE AND LEMON TREES TO SHADE SOUTHERN WALL

ECOLOGY
PAVING | PORUS PAVING TO REDUCE SURFACE PONDING OF WATER

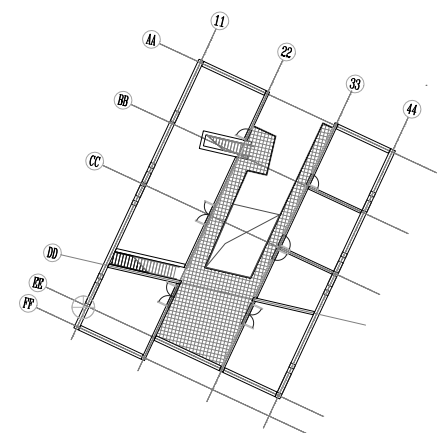
MARRAKECH, MOROCCO | Cultural Center
مركز ثقافي غارم حلالا داني دمل
design strategies | form, volume, color & texture



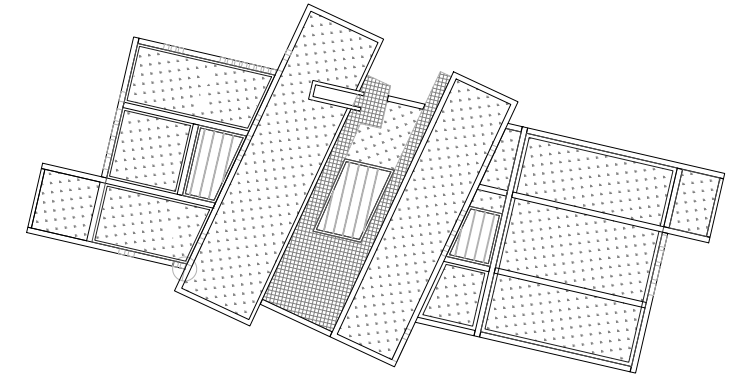
WALL SECTION | NTS



GROUND LEVEL PLAN | SCALE 4:1



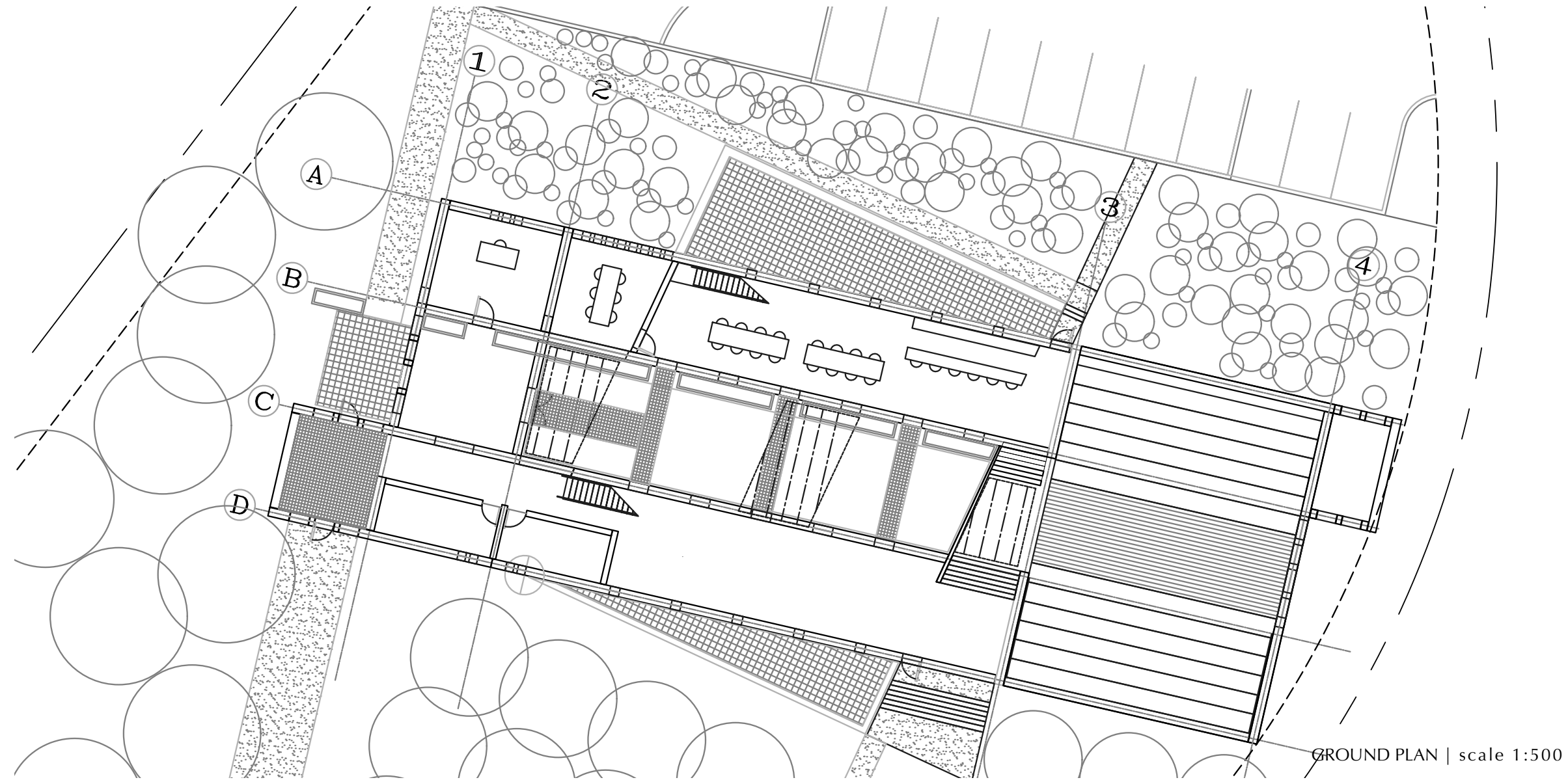
UPPER LEVEL PLAN | SCALE 4:1



ROOF LEVEL PLAN | SCALE 4:1



MARRAKECH, MOROCCO | Cultural Center
 شكارةم عارم حلا ةني دمل
 desig strategies | form, volume, color & texture



GROUND PLAN | scale 1:500



MARRAKECH, MOROCCO | Cultural Center
شكارم عارم حل اةني دم ل
design strategies | form, volume, color & texture

Surface | **Methodology** working sample A | Sacramento Youth Hospice

The Essence of Thoughts | **The Assemblage**

Thoughts essential to understanding surfaces as composition of bound essences that evoke a particular ambiance regarding. Each essence (poster) captures a mood (feeling) that is essential to the recognition of ambiance as potential. An essence identifies a particular core property that is essential for a thing to be what it is, place.

Ambiance | place
the identification of a sense response

- feeling. IDENTIFY | the essence of a particular place
- feeling. IDENTITY | the cultural artifact that marks the terrain in time
- feeling. IDENTIFICATION | the root form of thought from which time is bridged

Essence | typology
the inherent nature of an identified form

- form. POTENTIAL | the essence form as a recognition of intentionality
- form. IDEAL | the essence of form as an sculpted sensation of textures
- form. DETERMINED | the conceptualization of thoughts as an organized entity

Surface | program
the embodied phenomena as a potential moment

- experience. TEXTURE | the existence of materials as a interpretation of place
- experience. LIGHT | the essence of light as a presence revealing the textural nature within
- experience. AMBIENT | an artifact that is potential material formation emerging within existing topographies derived from cultural actions.



ambiance.ESSENCE | the **FABRIC** is a confluence of dense textures.



ambiance.ARTIFACT | **Patch** the phenomena, of colored cities stitched as if to patch time.



ambiance.FORM | the **LOOM** the object, becomes tool from within which culture becomes more.



essence.POTENTIAL | the **LOOM** is a way of thinking about **FABRIC**.



essence.IDEAL | the form as imagined is a blend of artful **VOLUMES**.



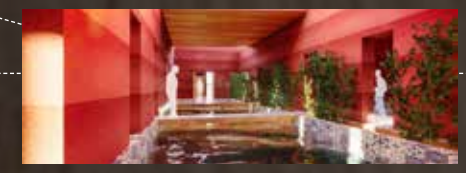
essence.DETERMINED | the form is an **AXIAL** composite of interwoven volumes.



surface.TEXTURE | the essence of **clay** is iron **oxide grains** absorbed into a gradient of **color**.



surface.LIGHT | the essence of light is a surface of voids **permeated** by rhythmic tones.



surface.FORM | The LOOM... a harmonious tapetry of diverse cultural **strands**.

DIMMUBORGIR, ICELAND | Visitor Center

design strategies | plane, repetition & texture



map | GREENSPACE



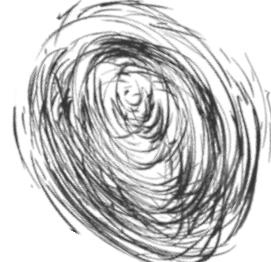
map | WATER (lake)



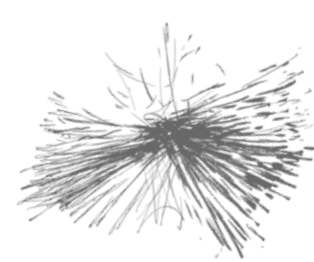
map | ROADS



force | WIND



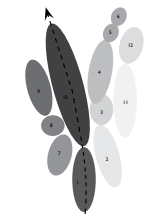
force | LIGHT



force | VIEWS (away)



form | CIRCULATION



form | BUBBLE DIA.



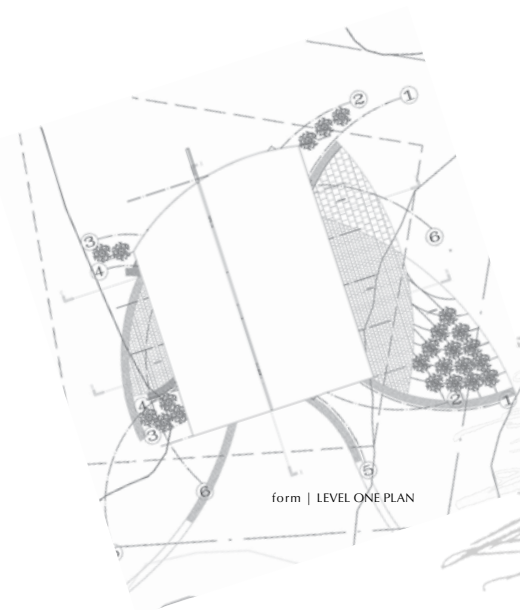
form | WALLS



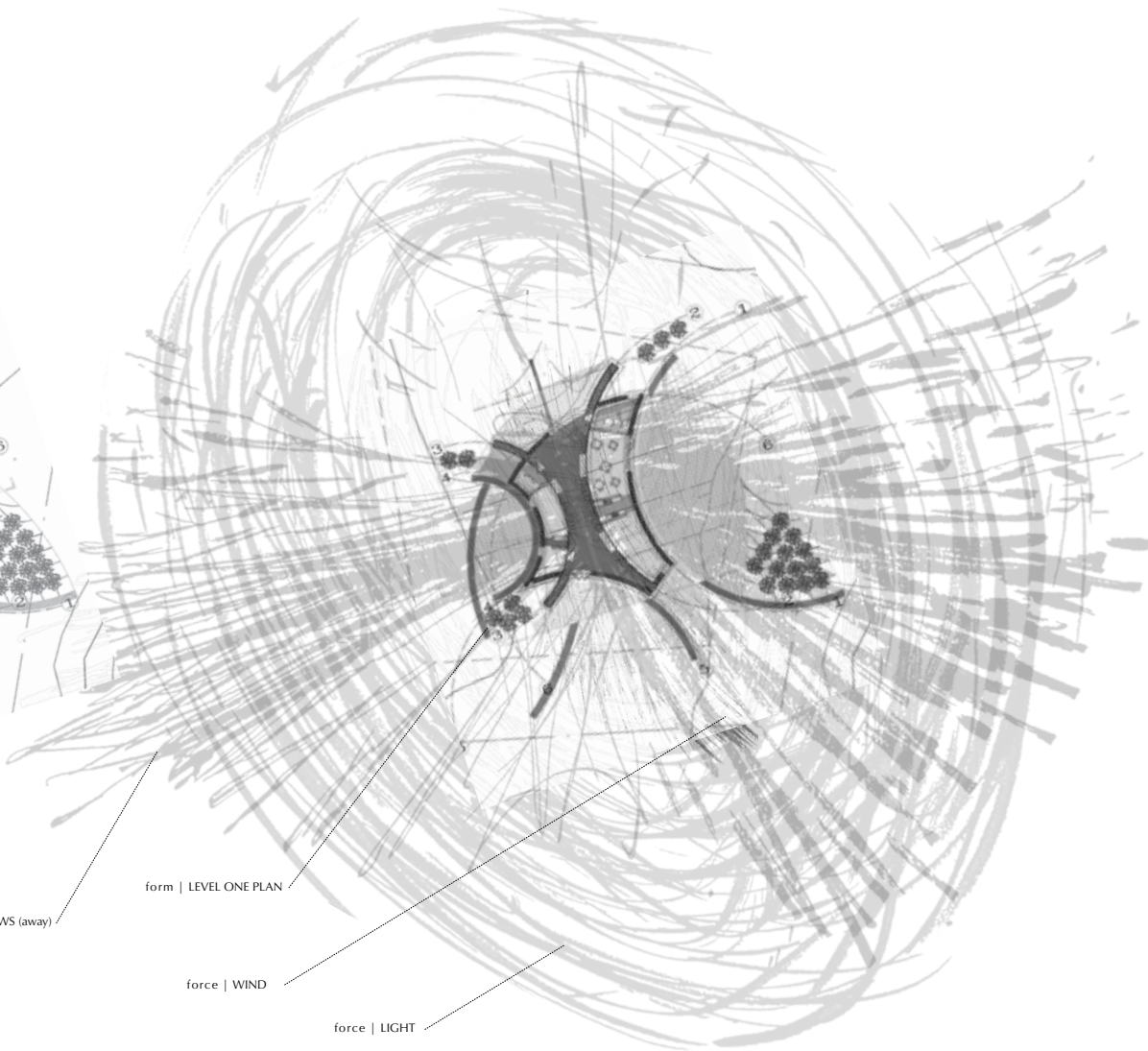
form | WALLS



form | MASSING



form | LEVEL ONE PLAN



force | VIEWS (away)

form | LEVEL ONE PLAN

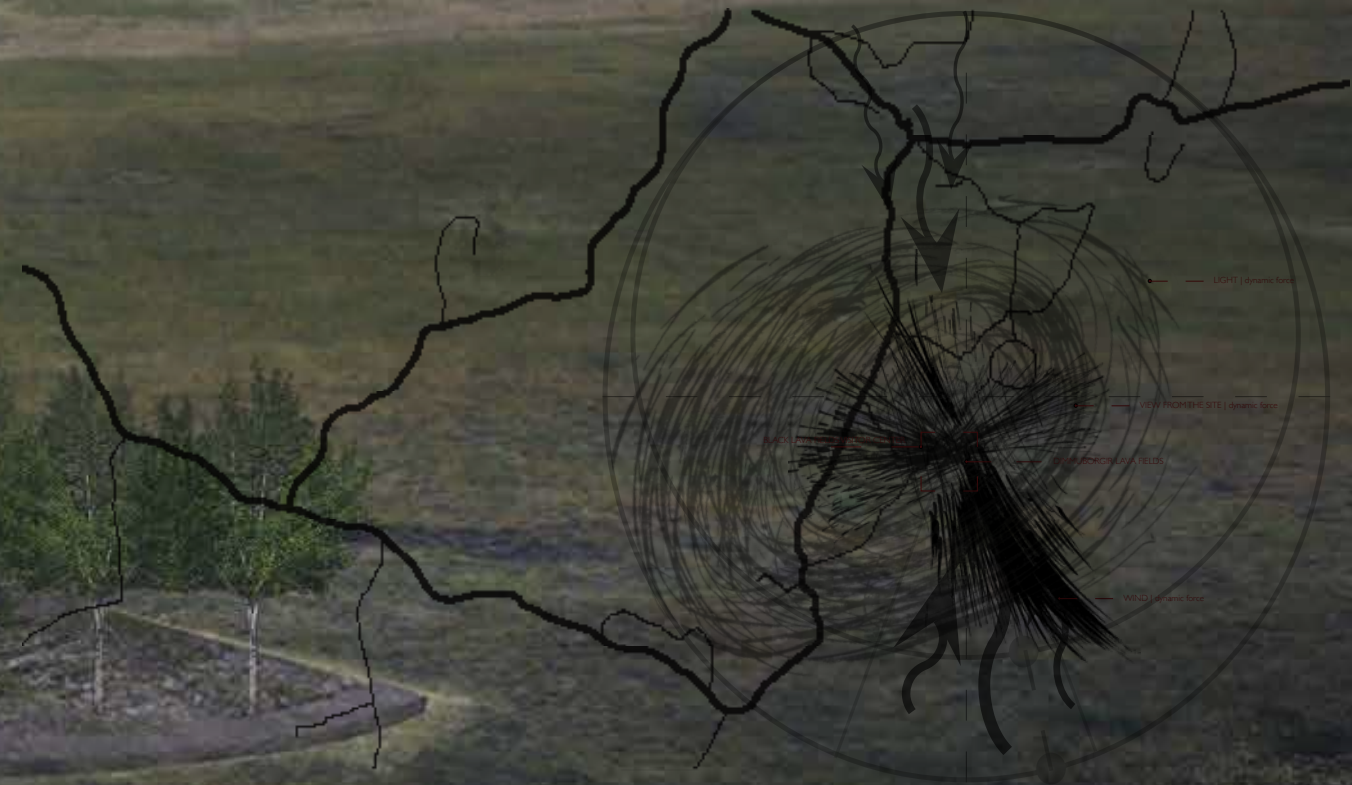
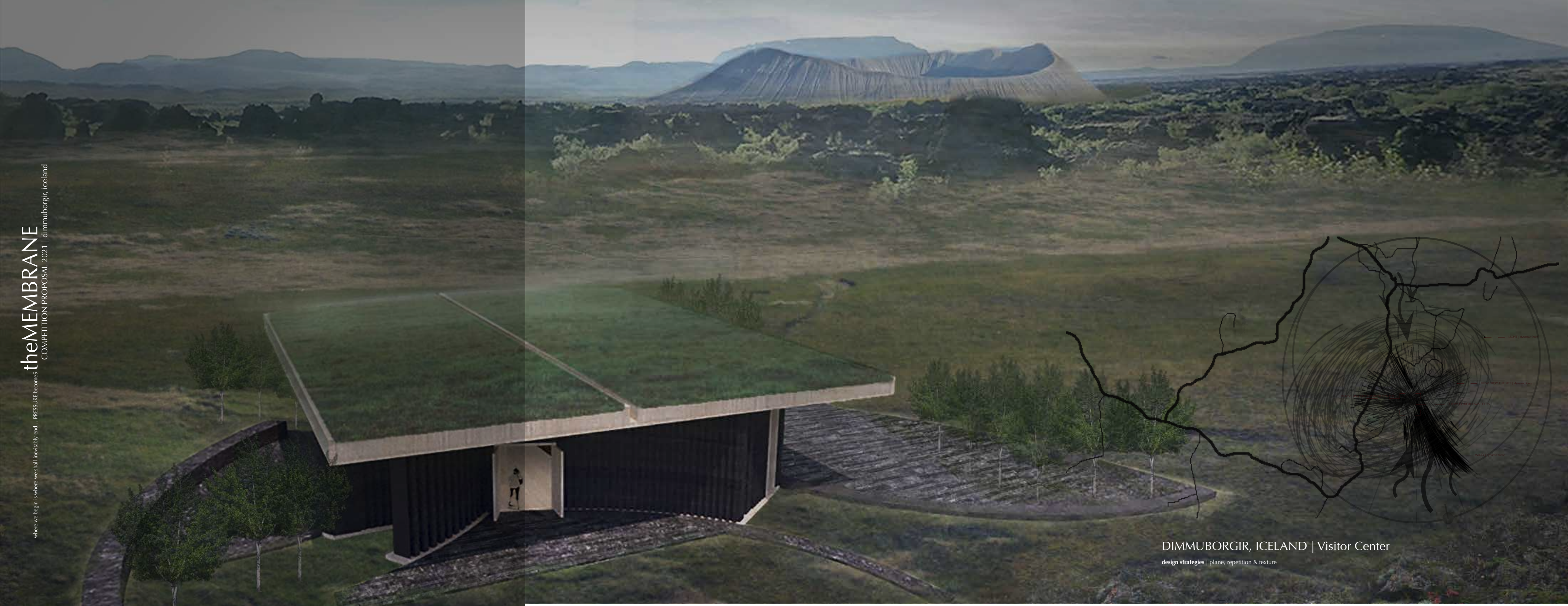
force | WIND

force | LIGHT

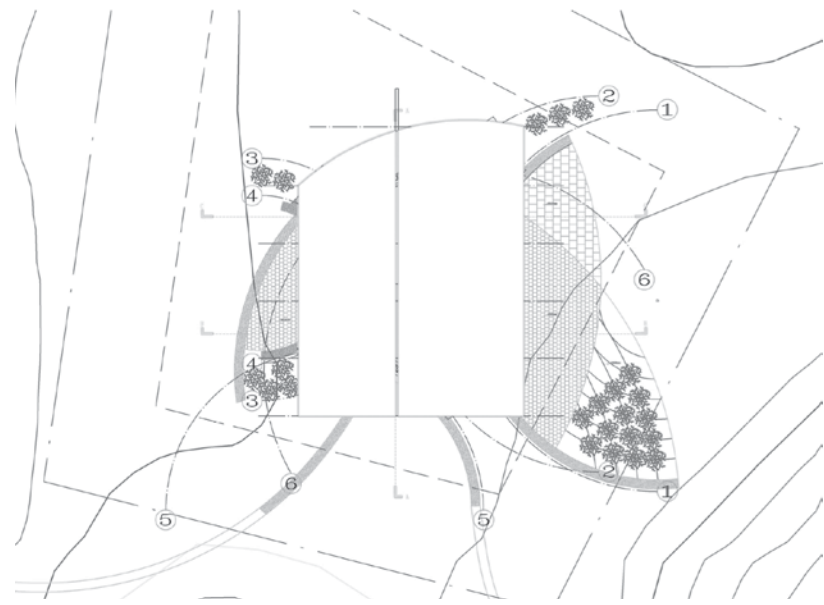
SITEanalysis

AMBIANCE | Pressure is a sense of energy that exist as wind, light & view which form potential moments of the membrane...

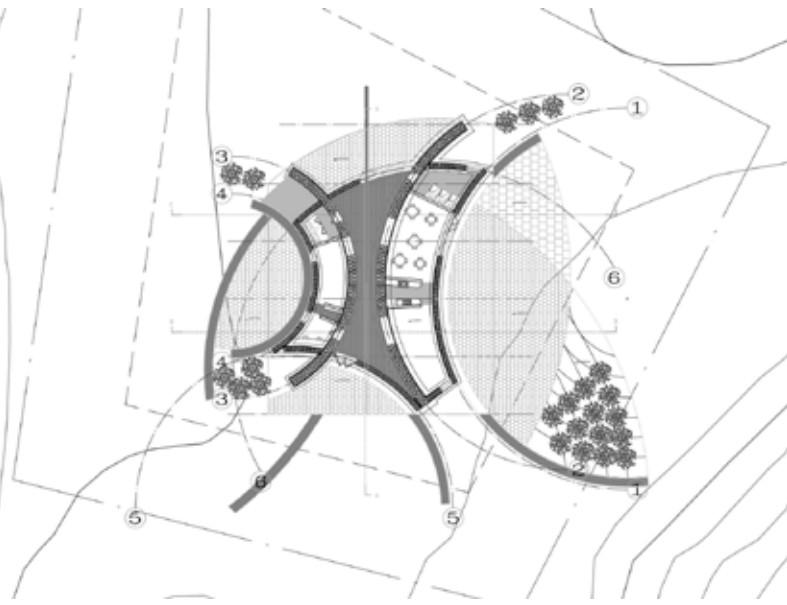
FORMhuman activities + spatial experience



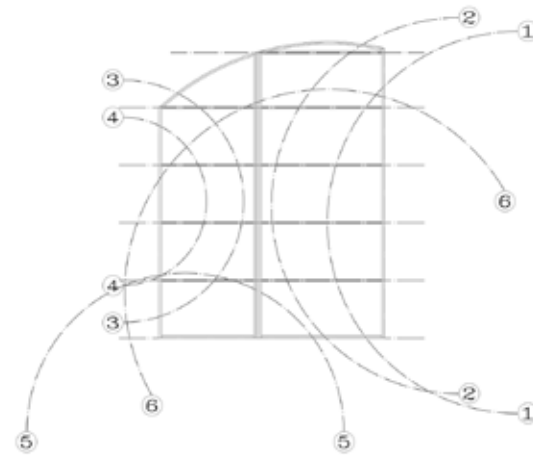
DIMMUBORGIR, ICELAND | Visitor Center
design strategies | plane, repetition & texture



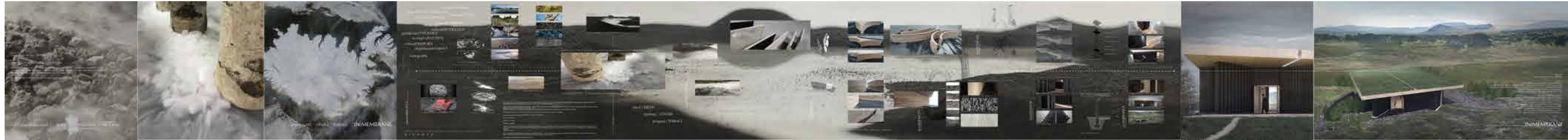
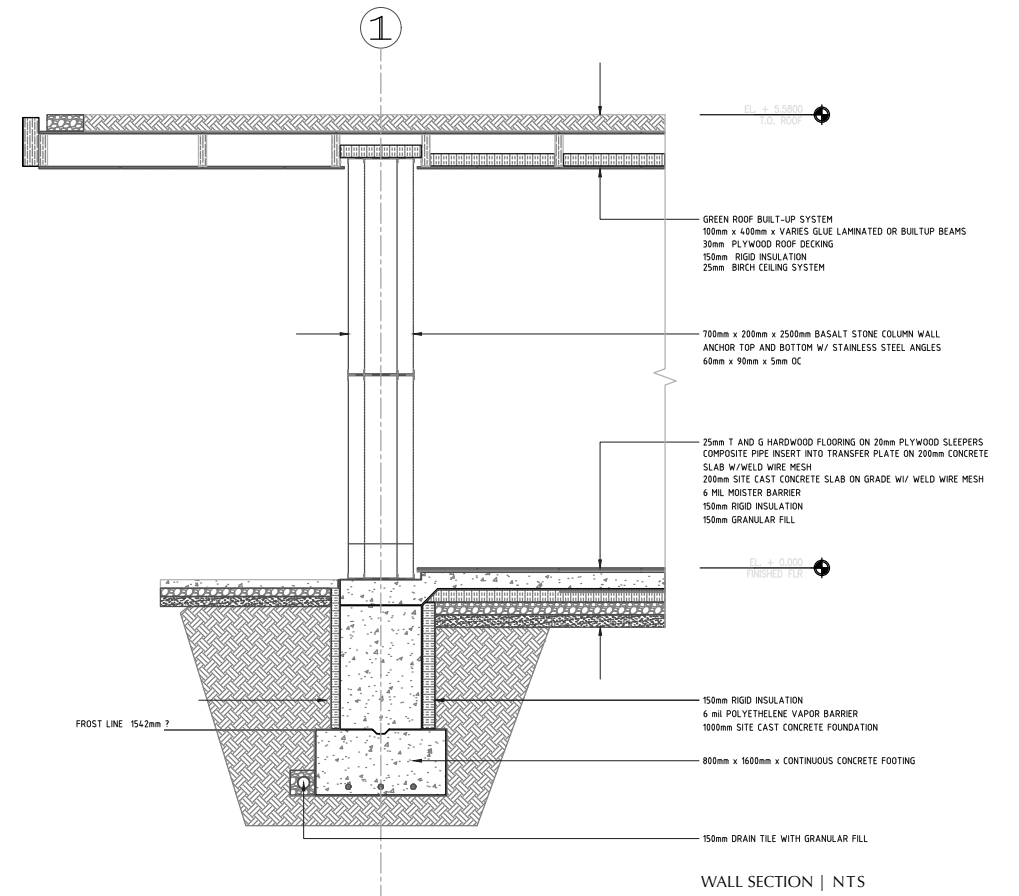
ROOF PLAN | NTS



LEVEL PLAN | NTS



PLAN (STRUCTURAL GRID) | NTS



DIMMUBORGIR, ICELAND | Visitor Center

design strategies | plane, repetition & texture



ZHUHAI, CHINA | Library Admissions & Employment Office

design strategies | void, repetition & form

theVASE

Design Administration Office 2018 | zhuhai, china

where we begin is where we shall inevitably end... KNOT becomes

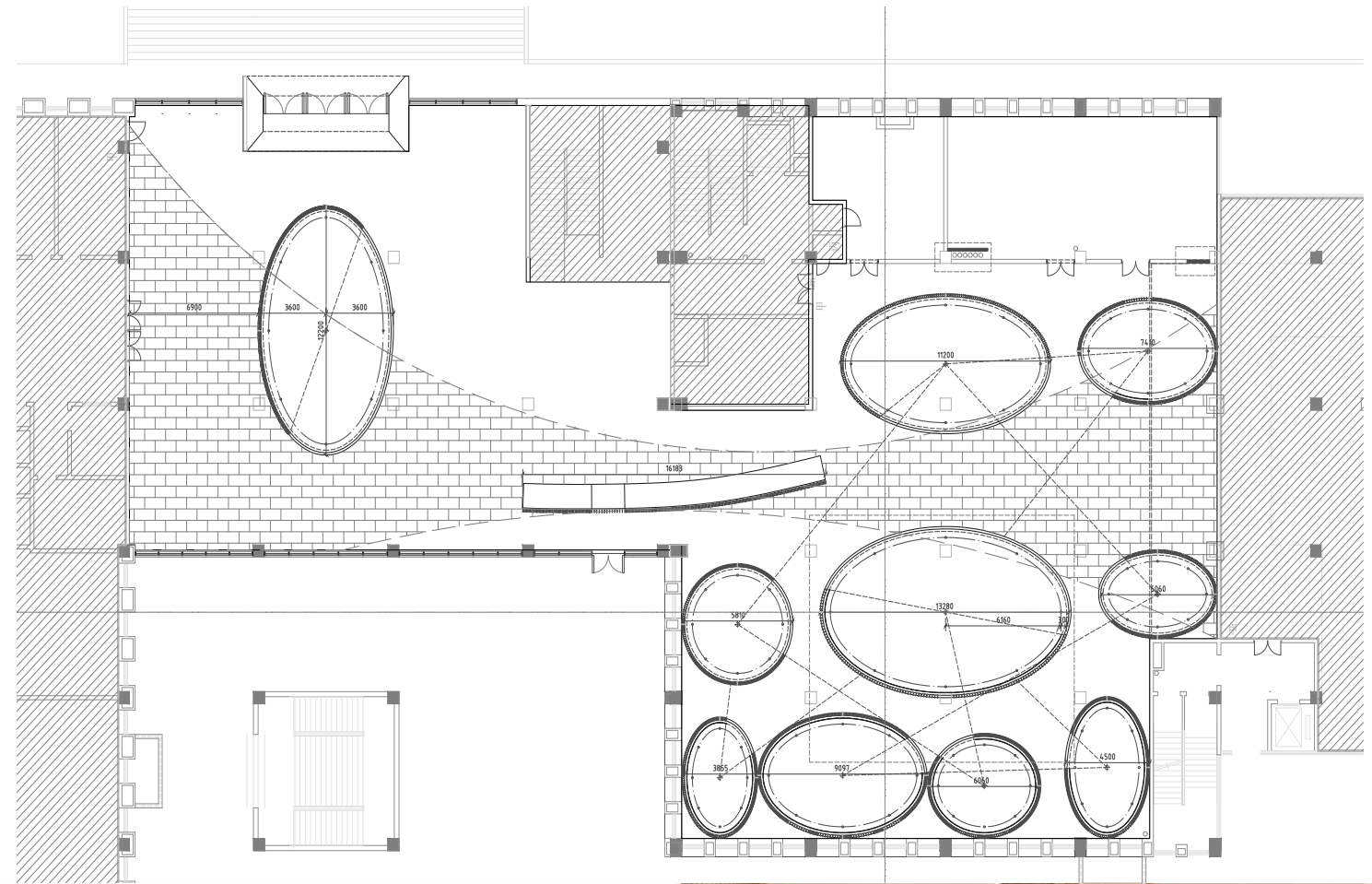


ZHUHAI, CHINA | Library Admissions & Employment Office

design strategies | void, repetition & form

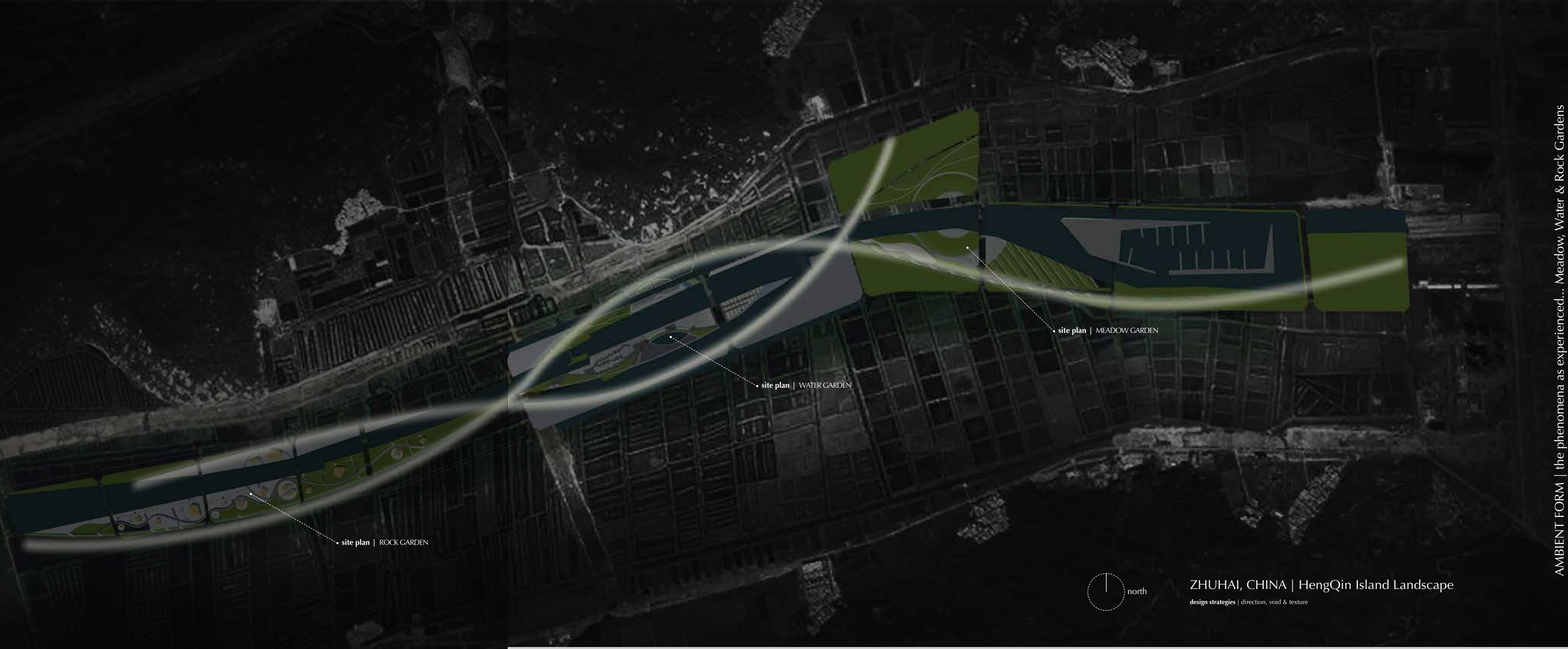
TEXTURE | Bamboo structural detail... materials | glue laminated bamboo, limestone, glass





ZHUHAI, CHINA | Library Admissions & Employment Office

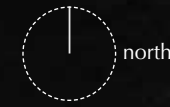
design strategies | void, repetition & form



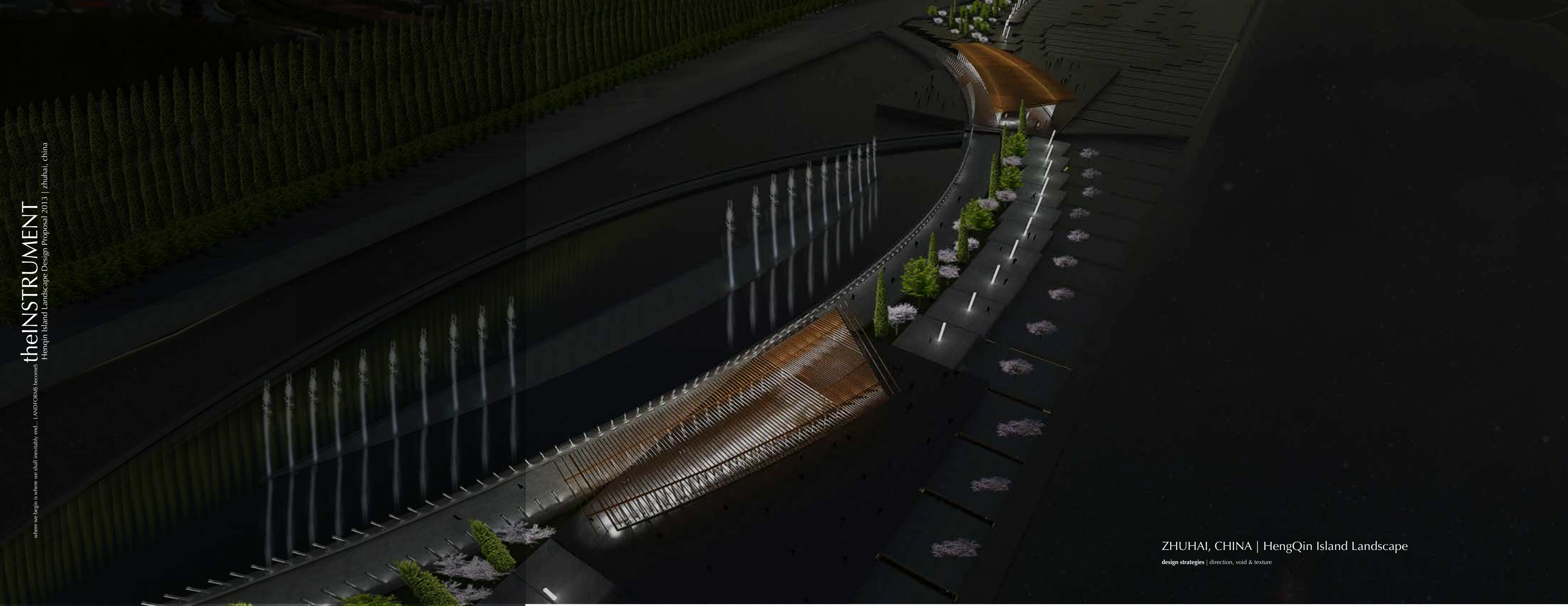
• site plan | ROCK GARDEN

• site plan | WATER GARDEN

• site plan | MEADOW GARDEN



ZHUHAI, CHINA | HengQin Island Landscape
design strategies | direction, void & texture



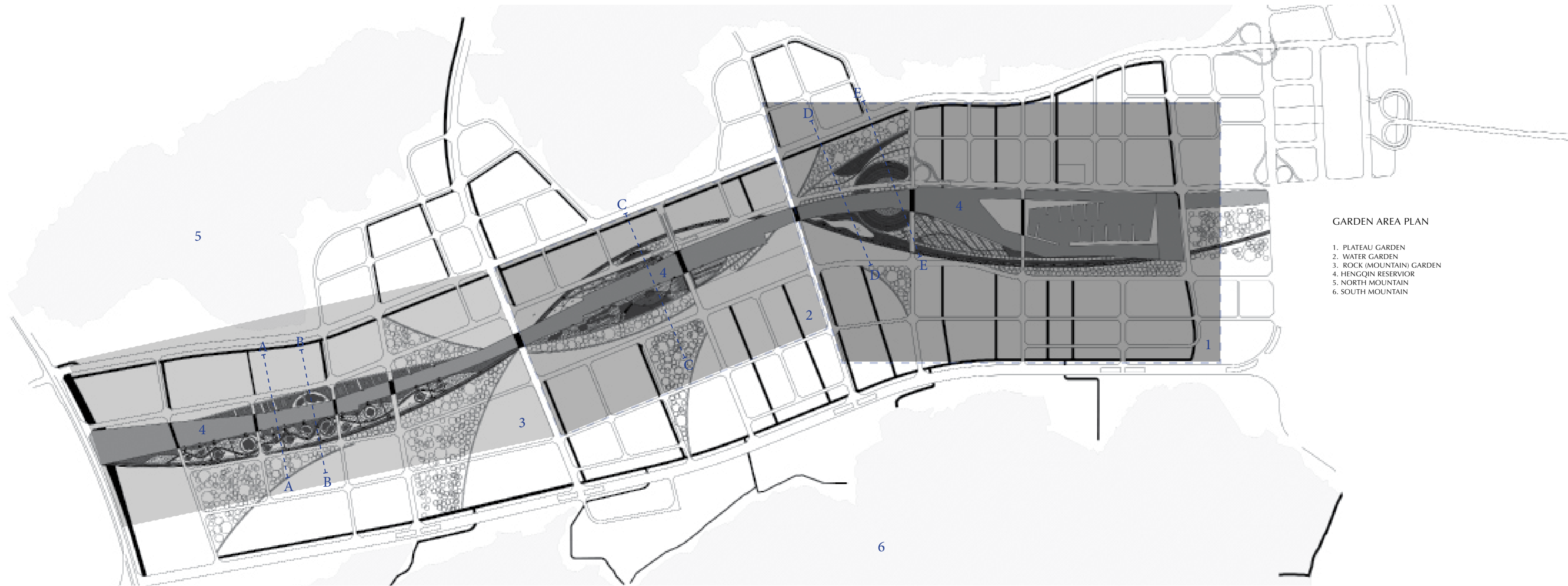
theINSTRUMENT

where we begin is where we shall inevitably end... LANDFORMS becomes HengQin Island Landscape Design Proposal 2013 | zhuhai, china



ZHUHAI, CHINA | HengQin Island Landscape

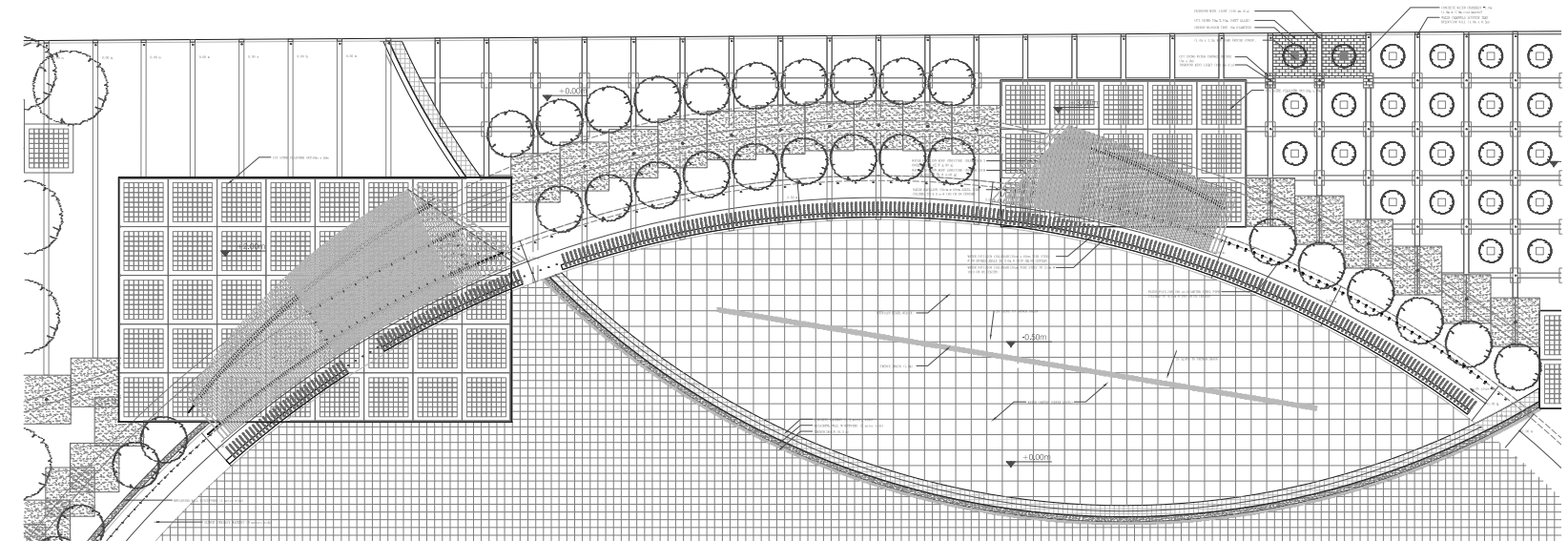
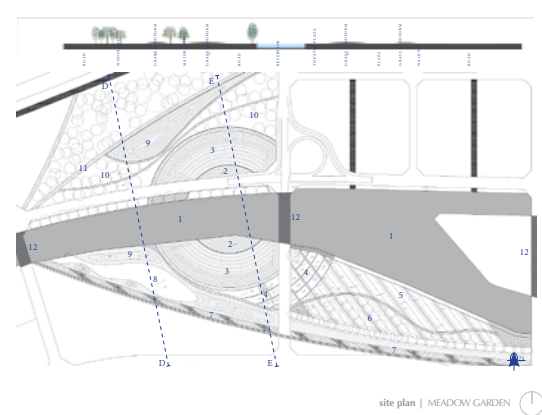
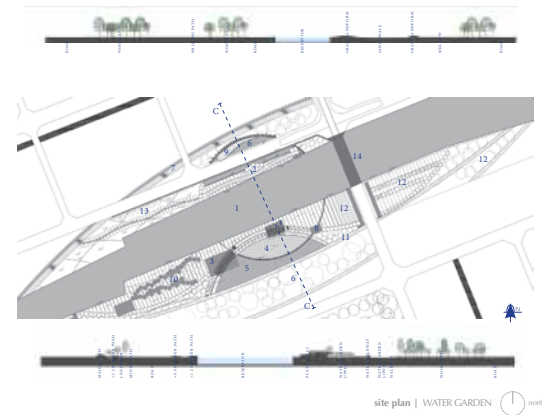
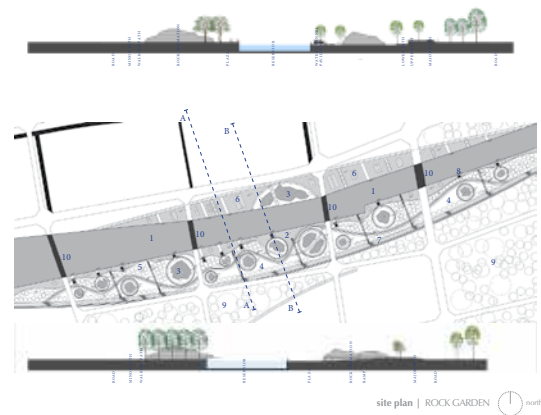
design strategies | direction, void & texture



GARDEN AREA PLAN

- 1. PLATEAU GARDEN
- 2. WATER GARDEN
- 3. ROCK (MOUNTAIN) GARDEN
- 4. HENGQIN RESERVIOR
- 5. NORTH MOUNTAIN
- 6. SOUTH MOUNTAIN





theINSTRUMENT

where we begin is where we shall inevitably end... LANDFORMS becomes
HengQin Island Landscape Design Proposal 2013 | zhuhai, china



ZHUHAI, CHINA | HengQin Island Landscape
design strategies | direction, void & texture

Surface | **Methodology** working sample A | Sacramento Youth Hospice

The Essence of Thoughts | **The Assemblage**

Thoughts essential to understanding surfaces as composition of bound essences that evoke a particular ambiance regarding. Each essence (poster) captures a mood (feeling) that is essential to the recognition of ambiance as potential. An essence identifies a particular core property that is essential for a thing to be what it is, place.

Ambiance | place
the identification of a sense response

- feeling. IDENTIFY | the essence of a particular place
- feeling. IDENTITY | the cultural artifact that marks the terrain in time
- feeling. IDENTIFICATION | the root form of thought from which time is bridged

Essence | typology
the inherent nature of an identified form

- form. POTENTIAL | the essence form as a recognition of intentionality
- form. IDEAL | the essence of form as an sculpted sensation of textures
- form. DETERMINED | the conceptualization of thoughts as an organized entity

Surface | program
the embodied phenomena as a potential moment

- experience. TEXTURE | the existence of materials as a interpretation of place
- experience. LIGHT | the essence of light as a presence revealing the textural nature within
- experience. AMBIENT | an artifact that is potential material formation emerging within existing topographies derived from cultural actions.

grounding...



place | typology | program

www.surfacestudio.org | jb

grounding...

